

# Privacy Fence

## Chesterfield

### 1. Getting Started

- Be sure to call underground prior to digging
- Assemble gates (if necessary) and decide where they will be located
- Stake out the fence line
- Space and mark post hole locations for gate and sections (spacer bar/template may be useful)
- Start at gate end post and work outward to determine proper fence height relative to ground

### 2. Dig Holes

- Dig holes 30" deep or to frost line
  - hole size for 5 x 5 posts = 12"
- Clean holes and check for straight walls

### 3. Install First Post

- Insert post in hole
- Determine rough height
- Fill hole around post with concrete mix (sand, gravel and cement) approximately 2" below grade
- Tamp concrete in hole to eliminate air pockets
- Level and square post

### 4. Install Bottom Rail

- Tape the ends of any rail going into a post that is to be filled with concrete to prevent concrete seepage
- Insert lock ring in both ends of bottom rail
- Depress lock ring tabs, insert bottom rail in post
- Tabs will recoil to hold rail in post

### 5. Install Second Post

- Insert second post in hole
- Insert bottom rail in post
- Insert block under bottom rail to position of correct fence height
- Fill hole around second post with concrete mix
- Tamp, level and square fence
- Assembly may be continued by installing all bottom rails first or one section at a time

### 6. Support and Secure

- Level and square fence
- To lower a post, place a wood block from corner to corner of the post and carefully tap with a mallet
- Never strike the PVC post without a wood support

### 7. Install Pickets and Rails

- Pickets are cut at a 5° angle to accommodate a 1' slope (last picket has tongue ripped to sit flush against post)
- Insert pickets in bottom rail
- Insert top rail over pickets
- Depress lock ring tabs, insert top rail in post

### 8. Hang Gate/Install Hardware

- For complete details, see gate installation instructions in hardware box
- Position gate between posts
- Allow 1" gap for hinge and 3/4" for latch and gate swing
- Block up gate to square with fence; rails should be level
- Gate hardware must be mounted to two sides of the post

### 9. Solidify Gate Posts

- It is critical that gate hinge and latch posts are solid to ensure proper gate functionality. Two methods are available:
  - A. Concrete and rebar
    - Use two pieces of 1/2" rebar in each hinge, latch and end post
    - Rebar should extend from the bottom of the hole to 12" from the top of the post
    - Hold rebar in opposite corners of post with rebar separator clips
    - Fill post with concrete mix to cover rebar and hardware fasteners
    - Tamp post with a rubber mallet to eliminate air pockets
    - Leave gate on blocks for 72 hours to allow concrete to set
  - B. Aluminum gate post stiffener
    - Slide aluminum gate stiffener inside hinge, latch or end posts with open end facing routed hole
    - Drive a screw through the vinyl into the aluminum stiffener at the bottom of the post to hold in place
    - Insert post into ground
    - Fill hole with concrete around outside of post

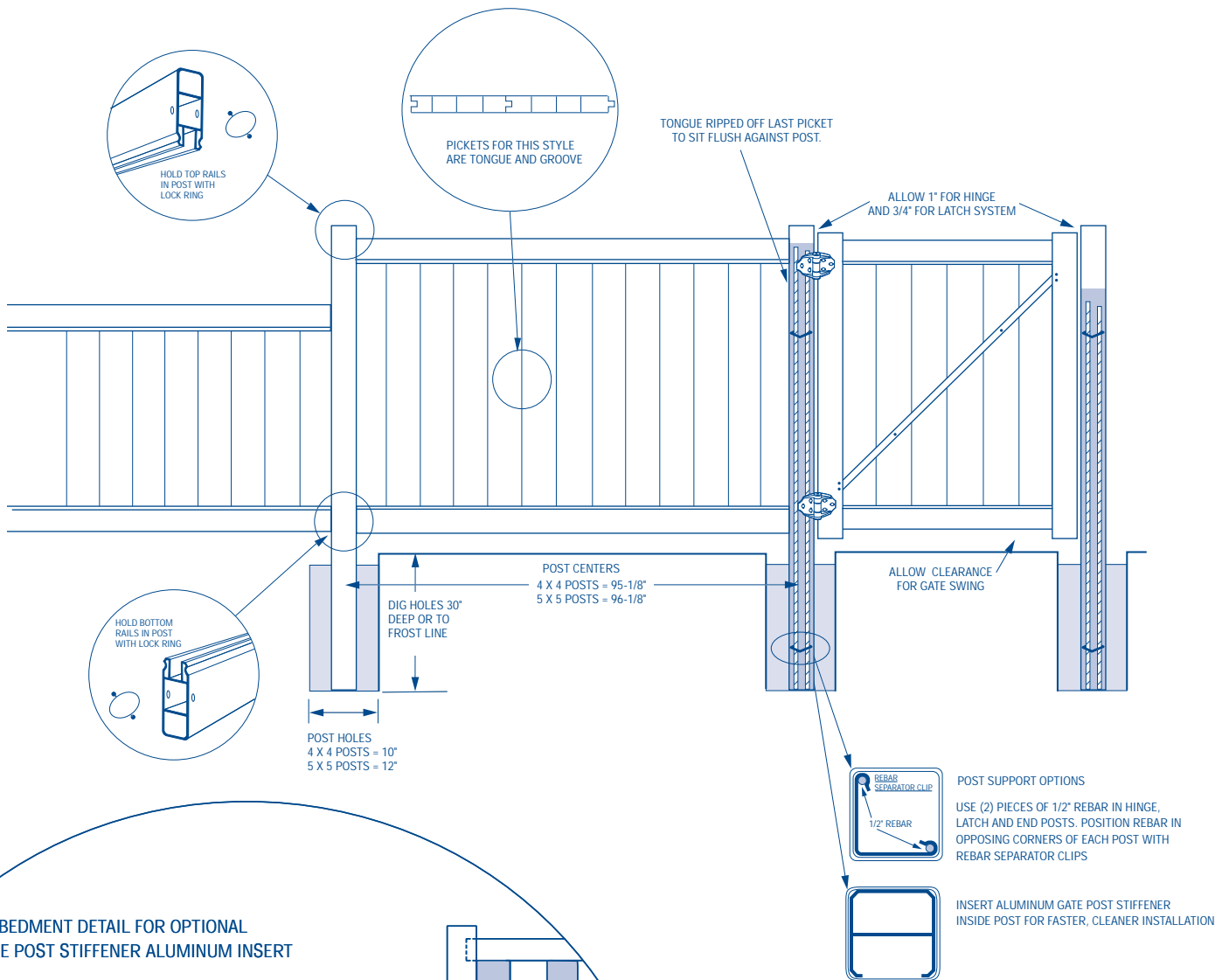
### 10. Install Caps

- Install post caps
- Caps may be secured with glue, silicone adhesive or #8 x 3/4" screws, caps and washers

**For accents, see page 30**

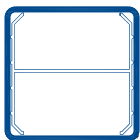
# Privacy Fence

Includes: Chesterfield  
 Chesterfield with CertaGrain™ Texture

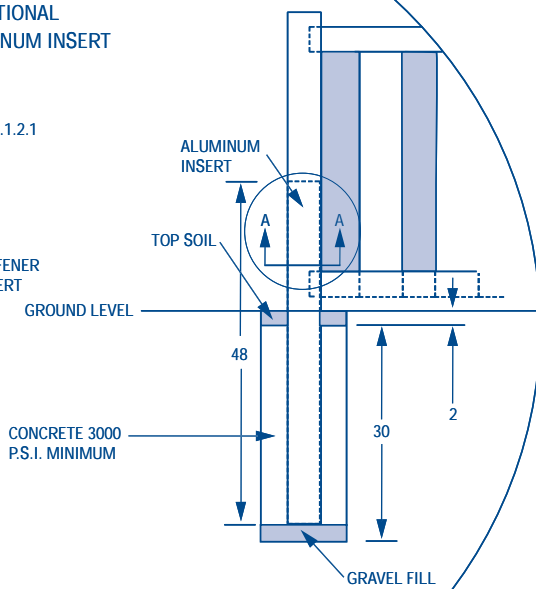


## EMBEDMENT DETAIL FOR OPTIONAL LINE POST STIFFENER ALUMINUM INSERT

MINIMUM 48" INSERT REQUIRED TO COMPLY WITH THE HIGH VELOCITY HURRICANE ZONES SECTION R44003.1.2.1 OF THE FLORIDA BUILDING CODE



SECTION A-A  
 LINE POST STIFFENER ALUMINUM INSERT



FEATURING  
 WINDBREAKER  
 TECHNOLOGY

# Privacy Fence

## Chesterfield with Huntington and Westminster Accents

### 1. Getting Started

- Be sure to call underground prior to digging
- Assemble gates (if necessary) and decide where they will be located
- Stake out the fence line
- Space and mark post hole locations for gate and sections (spacer bar/template may be useful)
- Start at gate end post and work outward to determine proper fence height relative to ground

### 2. Dig Holes

- Dig holes 30" deep or to frost line
  - hole size for 5 x 5 posts = 12"
- Clean holes and check for straight walls

### 3. Install First Post

- Insert post in hole
- Determine rough height
- Fill hole around post with concrete mix (sand, gravel and cement) approximately 2" below grade
- Tamp concrete in hole to eliminate air pockets
- Level and square post

### 4. Install Bottom Rail

- Tape the ends of any rail being inserted into a post that is to be filled with concrete to prevent concrete seepage
- Insert lock ring in each end of rail
- Depress lock ring tabs and insert rail in post. Tabs will recoil to hold rail in post

### 5. Install Second Post

- Insert second post in hole
- Insert bottom rail in post
- Insert block under bottom rail to position at correct fence height
- Fill hole around second post with concrete mix
- Tamp, level and square fence
- Assembly may be continued by installing all bottom rails first, or one section at a time

### 6. Support and Secure

- Level and square fence
- To lower a post, place a wood block from corner to corner on the post and carefully tap with a mallet
- Never strike the PVC post without a wood support

### 7. Install Pickets and Rails

- Insert pickets in bottom rail
- Insert top rail over pickets
- Depress lock rings tabs, insert top rail in post

### 8. Install Accents

- **Huntington**
  - Insert top 3 x 3 rail with larger holes facing down into post by depressing bullet clips as rail is inserted
  - Bullet clip will drop down to hold rail in place
  - Insert pickets thru rail and lock into top fence section rail (Pickets are factory crimped to hold in place)
  - To create desired scalloped effect, longer length pickets will need to be cut and then crimped, or a bullet clip may be inserted to hold picket in rail
- **Westminster**
  - Insert bottom and side channels (overlap ends) into position on rail and posts - secure with #8 x 1-1/2" screws
  - Insert lattice into channels
  - Slide top channel over lattice
  - Insert top 3 x 3 rail into routed post holes
  - Secure top channel to 3 x 3 top rail with #8 x 1-1/2" screws

### 9. Hang Gate/Install Hardware

- For complete details, see gate installation instructions in hardware box
- Position gate between posts
- Allow 1" gap for hinge and 3/4" for latch and gate swing
- Block up gate to square with fence; rails should be level
- Gate hardware must be mounted to two sides of the post

### 10. Solidify Gate Posts

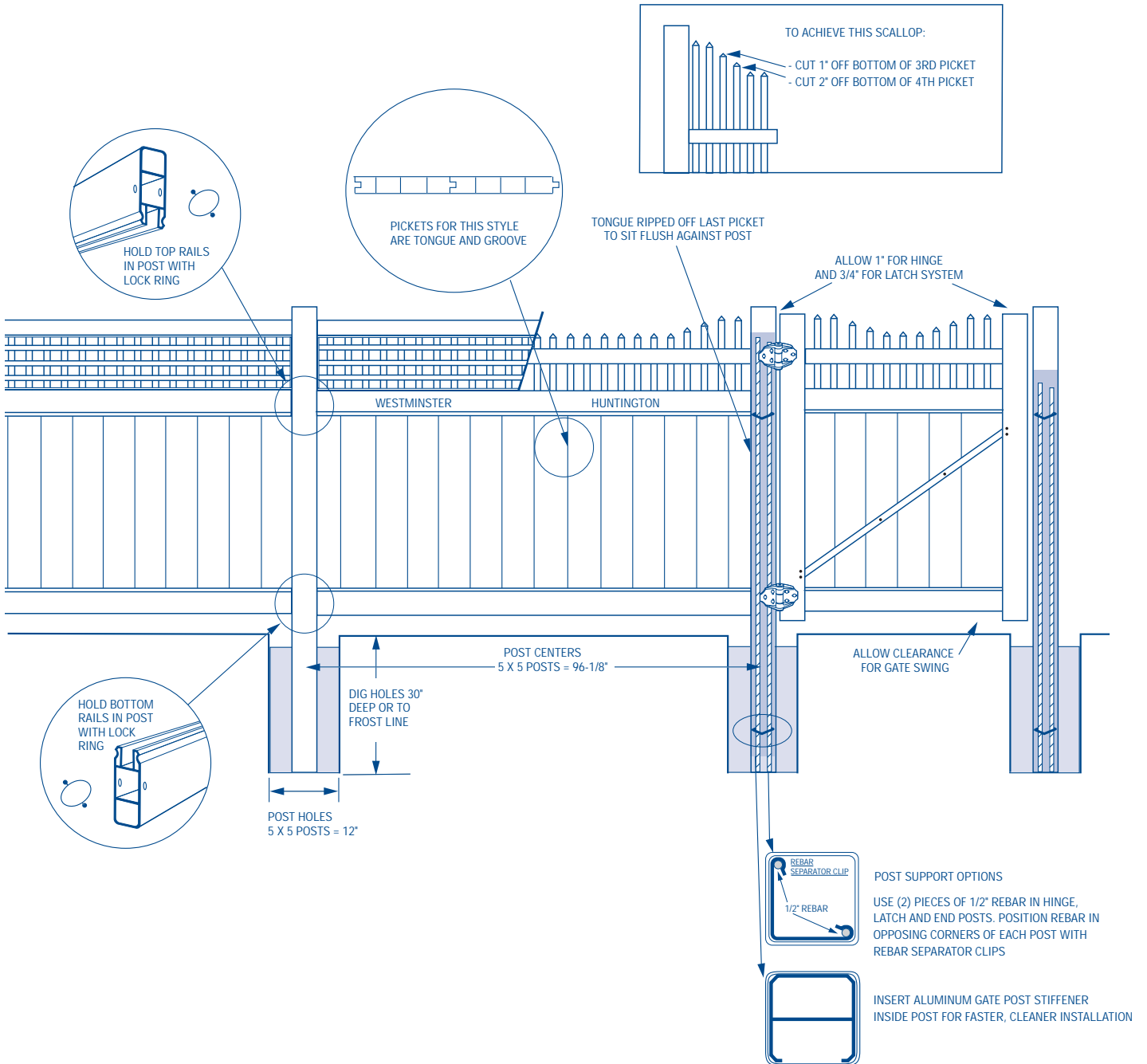
- It is critical that gate hinge and latch posts are solid to ensure proper gate functionality. Two methods are available:
  - A. Concrete and rebar
    - Use two pieces of 1/2" rebar in each hinge, latch and end post
    - Rebar should extend from the bottom of the hole to 12" from the top of the post
    - Hold rebar in opposite corners of post with rebar separator clips
    - Fill post with concrete mix to cover rebar and hardware fasteners
    - Tamp post with a rubber mallet to eliminate air pockets
    - Leave gate on blocks for 72 hours to allow concrete to set
  - B. Aluminum gate post stiffener
    - Slide aluminum gate stiffener inside hinge, latch or end posts with open end facing routed hole
    - Drive a screw through the vinyl into the aluminum stiffener at the bottom of the post to hold in place
    - Insert post into ground
    - Fill hole with concrete around outside of post

### 11. Install Caps

- Install post caps
- Caps may be secured with glue, silicone adhesive or #8 x 1-1/2" screws, caps and washers

# Privacy Fence

Includes: Chesterfield with Huntington Accents  
 Chesterfield with Westminster Accents



# Privacy Fence

## Norfolk 1

### 1. Getting Started

- Be sure to call underground prior to digging
- Assemble gates (if necessary) and decide where they will be located
- Stake out the fence line
- Space and mark post hole locations for gate and sections (spacer bar/template may be useful)
- Start at gate end post and work outward to determine proper fence height relative to ground

### 2. Dig Holes

- Dig holes 30" deep or to frost line
  - hole size for 5 x 5 posts = 12"
- Clean holes and check for straight walls

### 3. Install First Post

- Insert post in hole
- Determine rough height
- Fill hole around post with concrete mix (sand, gravel and cement) approximately 2" below grade
- Tamp concrete in hole to eliminate air pockets
- Level and square post

### 4. Install Bottom Rail

- Tape the ends of any rail going into a post that is to be filled with concrete to prevent concrete seepage
- Insert lock ring in both ends of bottom rail
- Depress lock ring tabs, insert bottom rail in post
- Tabs will recoil to hold rail in post

### 5. Install Second Post

- Insert second post in hole
- Insert bottom rail in post
- Insert block under bottom rail to position of correct fence height
- Fill hole around second post with concrete mix
- Tamp, level and square fence
- Assembly may be continued by installing all bottom rails first or one section at a time

### 6. Support and Secure

- Level and square fence
- To lower a post, place a wood block from corner to corner of the post and carefully tap with a mallet
- Never strike the PVC post without a wood support

### 7. Install Pickets and Rails

- Insert pickets in bottom rail
- Insert top rail over pickets
- Depress lock ring tabs, insert top rail in post
- Insert midrail into posts
- Secure midrail on both sides through the same picket with (2) #8 x 1-1/2" screws, snap caps and washers

### 8. Hang Gate/Install Hardware

- For complete details, see gate installation instructions in hardware box
- Position gate between posts
- Allow 1" gap for hinge and 3/4" for latch and gate swing
- Block up gate to square with fence; rails should be level
- Gate hardware must be mounted to two sides of the post

### 9. Solidify Gate Posts

- It is critical that gate hinge and latch posts are solid to ensure proper gate functionality. Two methods are available:
  - A. Concrete and rebar
    - Use two pieces of 1/2" rebar in each hinge, latch and end post
    - Rebar should extend from the bottom of the hole to 12" from the top of the post
    - Hold rebar in opposite corners of post with rebar separator clips
    - Fill post with concrete mix to cover rebar and hardware fasteners
    - Tamp post with a rubber mallet to eliminate air pockets
    - Leave gate on blocks for 72 hours to allow concrete to sett
  - B. Aluminum gate post stiffener
    - Slide aluminum gate stiffener inside hinge, latch or end posts with open end facing routed hole
    - Drive a screw through the vinyl into the aluminum stiffener at the bottom of the post to hold in place
    - Insert post into ground
    - Fill hole with concrete around outside of post

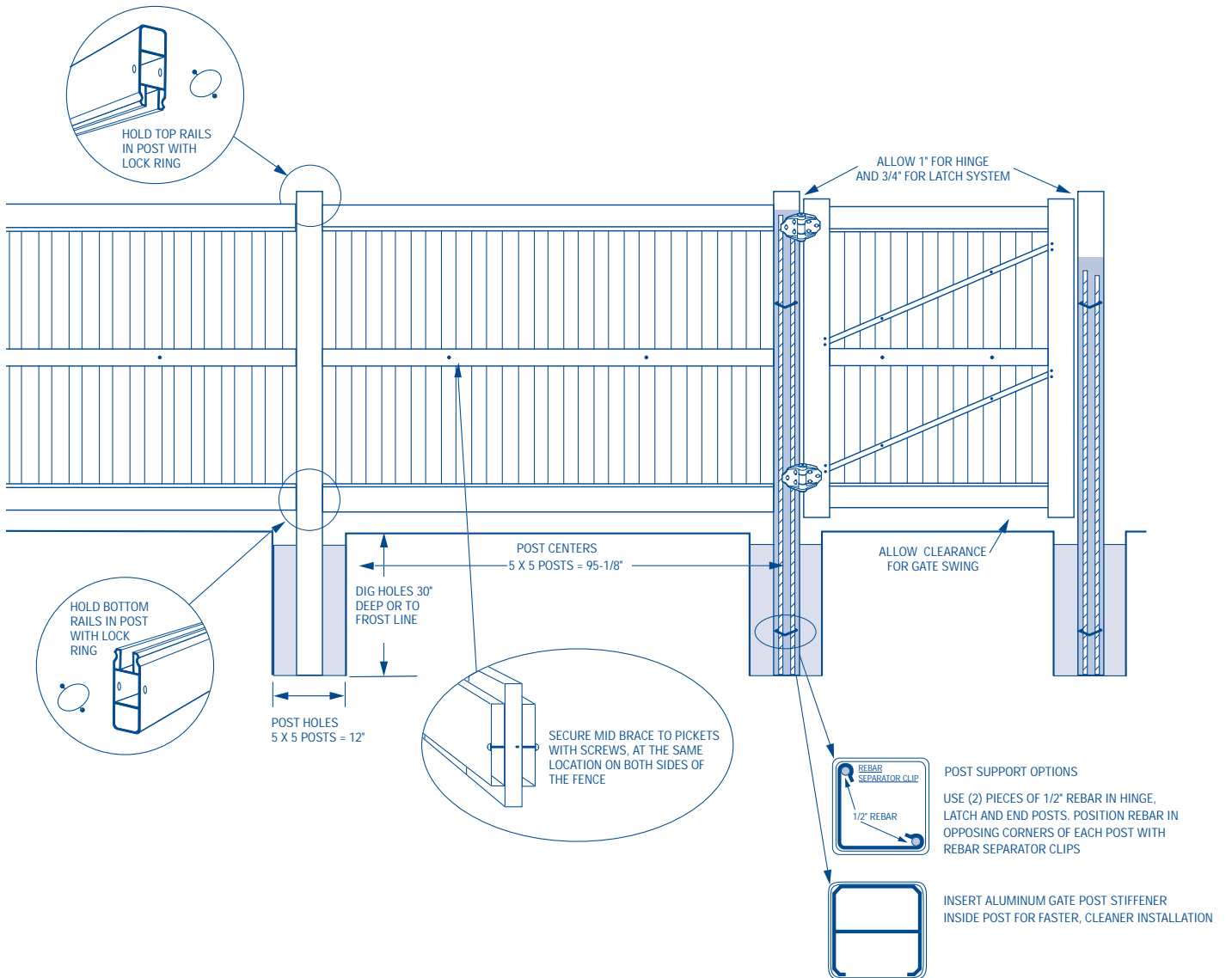
### 10. Install Caps

- Install post caps
- Caps may be secured with glue, silicone adhesive or #8 x 3/4" screws, caps and washers

**For accents, see page 30**

# Privacy Fence

Includes: Norfolk 1



# Privacy Fence

## Galveston

### 1. Getting Started

- Be sure to call underground prior to digging
- Assemble gates (if necessary) and decide where they will be located
- Stake out the fence line
- Space and mark post hole locations for gate and sections (spacer bar/template may be useful)
- Start at gate end post and work outward to determine proper fence height relative to ground

### 2. Dig Holes

- Dig holes 48" deep
  - hole size for 5 x 5 posts = 12"
- Clean holes and check for straight walls

### 3. Install First Post

- Insert post in hole
- Determine rough height
- Fill hole around post with concrete mix (sand, gravel and cement) approximately 2" below grade
- Tamp concrete in hole to eliminate air pockets
- Level and square post

### 4. Install Bottom Rail

- Tape the ends of any rail going into a post that is to be filled with concrete to prevent concrete seepage
- Insert lock ring in both ends of bottom rail
- Depress lock ring tabs, insert bottom rail in post
- Tabs will recoil to hold rail in post

### 5. Install Second Post

- Insert second post in hole
- Insert bottom rail in post
- Insert block under bottom rail to position at correct fence height
- Fill hole around second post with concrete mix
- Tamp, level and square fence
- Assembly may be continued by installing all bottom rails first or one section at a time

### 6. Support and Secure

- Level and square fence
- To lower a post, place a wood block from corner to corner of the post and carefully tap with a mallet
- Never strike the PVC post without a wood support

### 7. Install Pickets and Rails

- Insert pickets in bottom rail
- Insert mid-rail over pickets
- Depress lock ring tabs, insert mid-rail in post
- Insert next row of pickets in mid-rail
- Insert top rails over pickets
- Depress lock ring tabs, insert top rail in post

### 8. Hang Gate/Install Hardware

- Position gate between posts
- Allow 1" gap for hinge and 3/4" for latch and gate swing
- Block up gate to square with fence; rails should be level
- Gate hardware must be mounted to two sides of the post
- For complete details, see gate installation instructions in hardware box
- Galveston gate requires 3 hinges

### 9. Solidify Gate Posts

- It is critical that gate hinge and latch posts are solid to ensure proper gate functionality. Two methods are available:
  - A. Concrete and rebar
    - Use two pieces of 1/2" rebar in each hinge, latch and end post
    - Rebar should extend from the bottom of the hole to 12" from the top of the post
    - Hold rebar in opposite corners of post with rebar separator clips
    - Fill post with concrete mix to cover rebar and hardware fasteners
    - Tamp post with a rubber mallet to eliminate air pockets
    - Leave gate on blocks for 72 hours to allow concrete to set
  - B. Aluminum gate post stiffener
    - Slide aluminum gate stiffener inside hinge, latch or end posts with open end facing routed hole
    - Drive a screw through the vinyl into the aluminum stiffener at the bottom of the post to hold in place
    - Insert post into ground
    - Fill hole with concrete around outside of post

### 10. Fill Fence Posts

- Insert two pieces of rebar, in all end, line and corner posts. Fill with concrete mix to cover rebar at a height 1" below middle rail
- Tamp post with a rubber mallet to eliminate air pockets

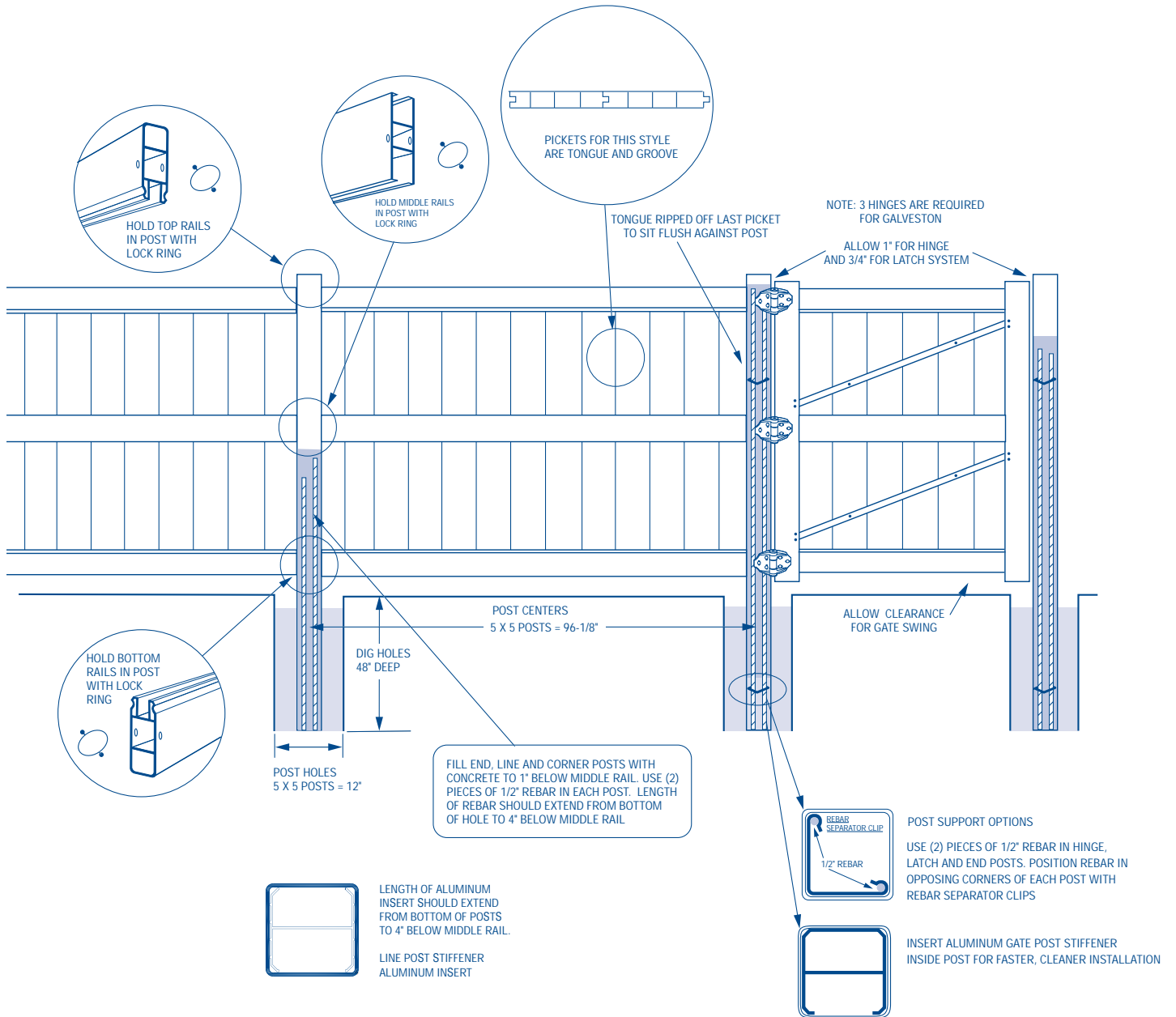
### 11. Install Caps

- Install post caps
- Caps may be secured with glue, silicone adhesive or #8 x 3/4" screws, caps and washers

**For accents, see page 30**

# Privacy Fence

Includes: Galveston





# Privacy Fence

## Lexington

### 1. Getting Started

- Be sure to call underground prior to digging
- Assemble gates (if necessary) and decide where they will be located
- Stake out the fence line
- Space and mark post hole locations for gate and sections (spacer bar/template may be useful)
- Start at gate end post and work outward to determine proper fence height relative to ground

### 2. Dig Holes

- Dig holes 30" deep or to frost line
  - hole size for 5 x 5 posts = 12"
- Clean holes and check for straight walls

### 3. Install First Post

- Insert post in hole
- Determine rough height
- Fill hole around post with concrete mix (sand, gravel and cement) approximately 2" below grade
- Tamp concrete in hole to eliminate air pockets
- Level and square post

### 4. Install Bottom Rail

- Tape the ends of any rail going into a post that is to be filled with concrete to prevent concrete seepage
- Insert lock ring in both ends of bottom rail
- Depress lock ring tabs, insert bottom rail in post
- Tabs will recoil to hold rail in post

### 5. Install Second Post

- Insert second post in hole
- Insert bottom rail in post
- Insert block under bottom rail to position of correct fence height
- Fill hole around second post with concrete mix
- Tamp, level and square fence
- Assembly may be continued by installing all bottom rails first or one section at a time

### 6. Support and Secure

- Level and square fence
- To lower a post, place a wood block from corner to corner of the post and carefully tap with a mallet
- Never strike the PVC post without a wood support

### 7. Install Pickets and Rails

- Insert pickets in bottom rail (last picket has tongue ripped to sit flush against post)
- Insert top rail over pickets
- Depress lock ring tabs, insert top rail in post

### 8. Hang Gate/Install Hardware

- For complete details, see gate installation instructions in hardware box
- Note: Actual preassembled gate width for Lexington is 42-3/8"
- Position gate between posts
- Allow 1" gap for hinge and 3/4" for latch and gate swing
- Block up gate to square with fence; rails should be level
- Gate hardware must be mounted to two sides of the post

### 9. Solidify Gate Posts

- It is critical that gate hinge and latch posts are solid to ensure proper gate functionality. Two methods are available:
  - A. Concrete and rebar
    - Use two pieces of 1/2" rebar in each hinge, latch and end post
    - Rebar should extend from the bottom of the hole to 12" from the top of the post
    - Hold rebar in opposite corners of post with rebar separator clips
    - Fill post with concrete mix to cover rebar and hardware fasteners
    - Tamp post with a rubber mallet to eliminate air pockets
    - Leave gate on blocks for 72 hours to allow concrete to set
  - B. Aluminum gate post stiffener
    - Slide aluminum gate stiffener inside hinge, latch or end posts with open end facing routed hole
    - Drive a screw through the vinyl into the aluminum stiffener at the bottom of the post to hold in place
    - Insert post into ground
    - Fill hole with concrete around outside of post

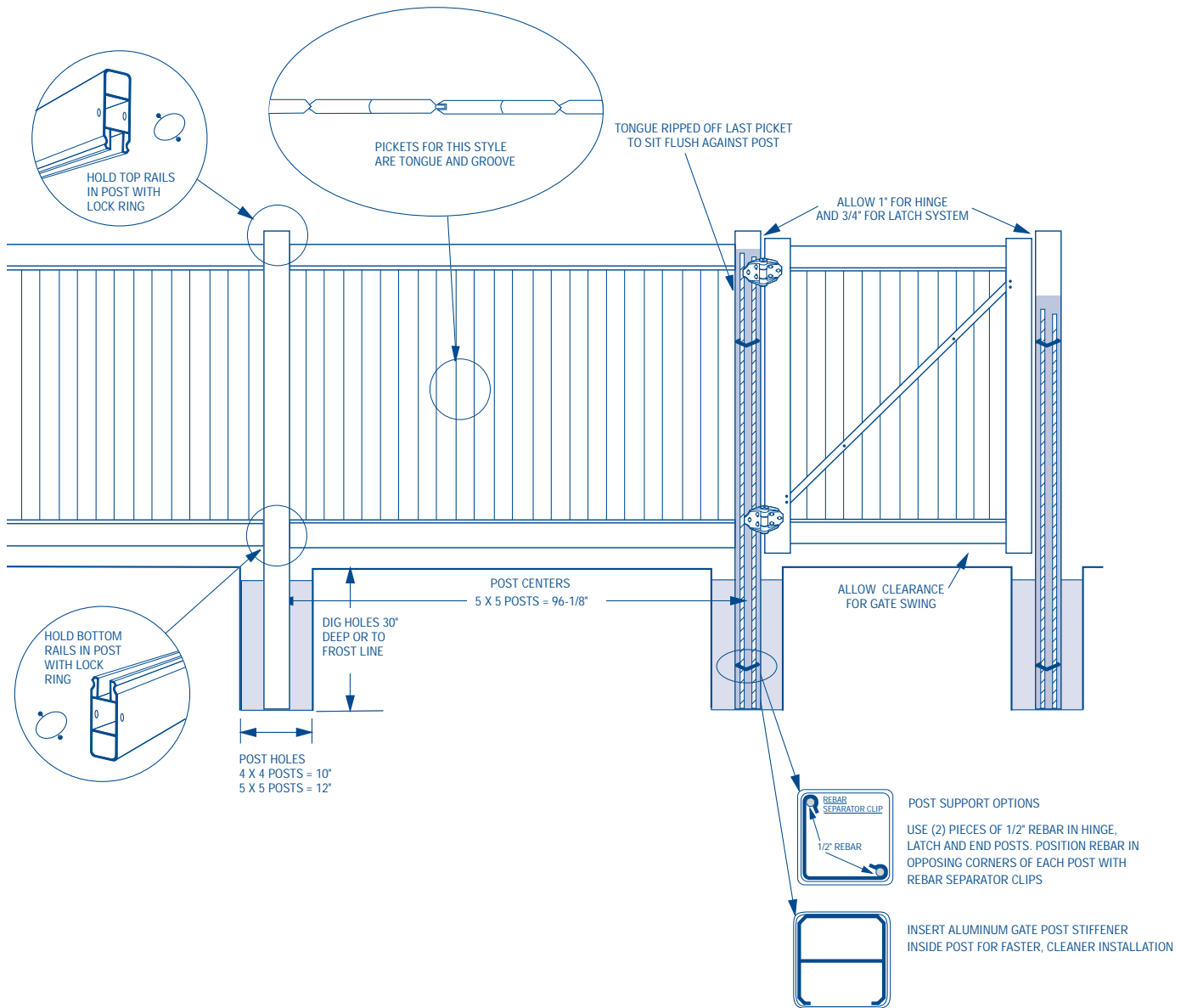
### 10. Install Caps

- Install post caps
- Caps may be secured with glue, silicone adhesive or #8 x 3/4" screws, caps and washers

**For Lattice accents, see page 31**

# Privacy Fence

Includes: Lexington



# Accent Fence

## Lattice, Victorian

Once the main fence section is installed, proceed as follows:

### Lattice

- Measure distance between inside faces of the posts
- Cut bottom channel to fit between posts
- Fasten bottom channel to top fence rail with (5) #8 X 1-1/2" screws evenly spaced along the length
- Insert lattice panel in channel
- Insert top channel over lattice
- Insert both ends of top channel into routed post holes
- Secure top channel in position with #8 x 3/4" screws from inside post
- Fasten lattice to both channels with (6) #8 x 3/4" screws, washers and snap caps spaced along channel (connect to the same lattice strip on top and bottom)

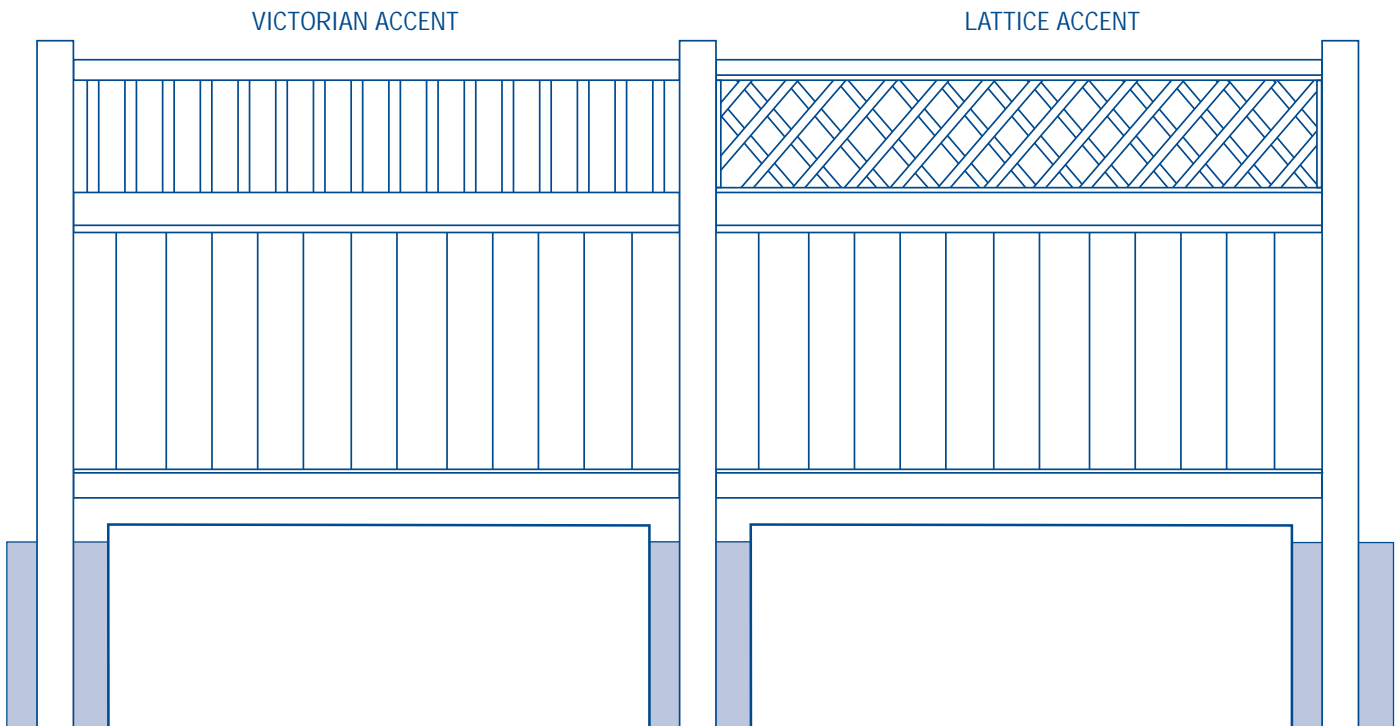
### Victorian

- Measure distance between inside faces of posts
- Center and cut bottom channel to fit between posts to maintain even picket spacing
- Fasten bottom accent rail to top fence rail with (5) #8 X 1-1/2" screws inserted through picket holes
- Insert pickets in bottom rail
- Insert top rail over pickets
- Insert both ends of top rail into routed post holes
- Secure top rail in position with #8 x 3/4" screws from inside the post

**NOTE: Accents can be added to the following styles:**

**Chesterfield**  
**Columbia**  
**Galveston**  
**Norfolk I**

SHOWN WITH CHESTERFIELD FENCE



## Accent Fence

### Lattice - Lexington Style

Once the main fence section is installed, proceed as follows:

#### Lattice

- Leave one end of deco top rail out of post
- Starting at the end, slide lattice into top rail channel
- Insert rail into routed post, secure with lockring
- Starting at the end, slide 1 1/2" square top channel over lattice
- Insert both ends of top channel into routed post
- Secure rail inside post with a #8 x 3/4" screw (do this on both ends)

SHOWN WITH LEXINGTON FENCE  
LATTICE ACCENT

